



TEMPLE SINAI
CONGREGATION OF TORONTO

Come Together



2023-2024 / 5784

Membership Guide

Message from Our Rabbi



Dear Temple Sinai family,

There has never been a more important time to join our congregation. Our world is a complicated place. We are surrounded by so many different messages. How do we know which ones are true? How do we know which ones we can trust? Eventually, we look to actions for clarification.

Our choices and our commitments represent our true place in the world. Joining Temple Sinai is one such choice. In days of rising public antisemitism and Jew-hatred, affiliating with a synagogue is no small thing. We are working together with our allies in the community to reject hatred, and to prepare and protect the next generation living with that reality. Temple has engaged in a significant building security project to keep our doors open and to keep them safe. The purpose is so that you and many others can enter them and take part in real, grassroots, value-laden Jewish programs and life.

Joining a progressive congregation that supports Israel today sends a very significant message. Our commitment to our one and only Jewish state has not wavered — especially during these complicated times with an Israeli government that is unprecedented in Israel's political history. Being a member of Temple Sinai is to be part of a collective voice that expresses our deeply held values about what a Jewish democratic state and its society must be in order to survive and thrive. And in a world where opinion seems to have replaced facts, and where science is ignored by many as a matter of convenience, your choice to be an active part of a modern and inclusive community that is deeply committed to a Jewish and democratic state is an action that can effect positive change in our world.

Thank you for renewing your connection to Sinai and our deeply held values. Together, let's make this new year better than the one before!

Rabbi Michael Dolgin



A photograph of the Temple Sinai building, a modern structure with large glass windows and a central dome, surrounded by greenery.

Come Together at Temple Sinai

Temple Sinai is more than just a synagogue; it's your spiritual home where you're among many warm, wonderful, and supportive people who make up our community. Whether at lifecycle moments, learning opportunities, during prayer, celebrations, Sinai Connections groups or Tikkun Olam programs, Temple Sinai has a place for you!

Benefits of Membership

- Belong to a warm, welcoming community where tradition meets innovation.
- Delight in a full roster of social, spiritual, and learning opportunities.
- Engage in an inclusive and equitable Temple environment.
- Experience life's events together: a baby naming, a bar or bat mitzvah, a wedding or a funeral with our rabbis and cantors and the support of our Temple community.
- Provide children opportunities to learn and celebrate Jewish living by embracing Jewish values, social justice and a focus on Israel.
- Enjoy musical programs and events throughout the year.
- Observe the High Holy Days together – either in person or virtually.
- Receive rabbinic counselling and pastoral support.
- Connect in meaningful ways to Israel and our larger world.
- Opportunity to purchase burial plots at Pardes Chaim or the Interfaith section at Lambton Hills Cemetery.
- Use of Temple Sinai's facilities including newly renovated Fanny and Al Green Halls complete with the new Shnier Family Kitchen.

Get Involved at Temple Sinai

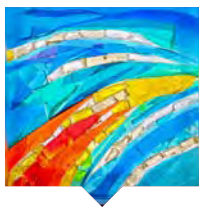
For nearly 70 years, Temple Sinai has been recognized as one of the most vibrant and innovative Jewish congregations in the Toronto area. Today, that legacy continues with our welcoming and inclusive approach to building community, which is firmly rooted in Jewish traditions and values.

Our programs, outreach and services are created to bring meaning, comfort, learning and joy to our members. Designed to inspire and engage, our programs endeavour to involve congregants as active participants or contributors.

We have outlined our opportunities in four categories:



Community



Learning



Spiritual



Tikkun Olam

At Temple Sinai, contributions are received in a myriad of ways. The mitzvah of tzedakah – be that with your time, expertise, insights, or financial contributions, is appreciated greatly. We hope you will find ways to be inspired by and contribute to the strength our vibrant community.

Community

This is your community to create; one which is yours to shape and form. Temple Sinai offers an excellent range of opportunities for you, at every age and stage, to build relationships and find your own special place in the Temple community.

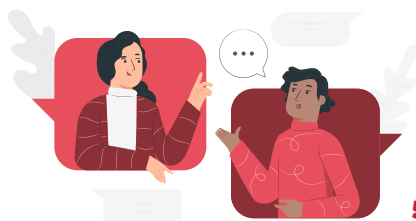
Be Inspired

Get connected through our groups:

- Canasta Americana
- Choir
- Eco-Sinai
- Gardening
- Israel Connections
- LOTSSY (Senior Youth)
- Men's Chat Group
- NextGen (20s & 30s)
- Photography
- Pilates
- Power of Posture
- Renaissance
- Sinai in the Sun
- Temple Sinai Social Club
- Temple Sinai Stitchers
- Tikkun Olam

Contribute

Along with making new friends, learning new things and strengthening our community, we're always on the lookout for new leaders to help with our existing groups. Temple is always interested in ideas to form new groups. We appreciate administrative or special event help, as well as technical assistance.







Learning

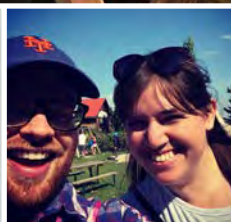
Lifelong learning is built into the fabric of our community, and regardless of age, there is always something new to learn at Temple Sinai. Our rabbis, cantors and educators are always here to help you connect to the wealth of Jewish wisdom, and answer your burning questions as you pursue your Jewish journey.

Be Inspired

- Rabbinic series on relevant topics
- Weekly Chevrat Torah Study
- Masterclasses during the High Holy Days
- Lewis David Katzman Book program
- Adult Hebrew language classes
- Torah chanting classes
- Special learning opportunities with guest speakers
- **Remote Shalom:** online program with our sister congregation in Israel, *Ramot Shalom*

Contribute

- Sponsor a speaker or study session.
- **Temple Sinai School:** Parent Advisory Group.
- **Temple Sinai Community Preschool:** Parent Advisory Group, Community Contributors.
- **Youth Opportunities:** Kehillah, Madrichim, LOTSSY Board (League of Temple Sinai Senior Youth), Teen Israel Trip 2025, post-secondary scholarships through the Gordon Scholars program.
- **Young Families:** help lead our young family programming and encourage involvement.





TEMPLE SINAI
**COMMUNITY
PRESCHOOL**

TWINKLE TOTS

KIDDIE KO-OP

NURSERY



COMPLIMENTARY TEMPLE MEMBERSHIP INCLUDED WITH REGISTRATION!

Temple Sinai Community Preschool provides children (aged 10 months to four years) with a safe, accessible and supportive environment that stimulates little minds with high quality, creative, play-based programming while instilling core Jewish values.



With a low teacher-student ratio, an ELECT-based curriculum and active parent participation, our CWELCC-approved preschool is dedicated to fostering each child's love of learning to help them reach their full potential.

Our state-of-the-art facility boasts bright, spacious classrooms, a fully equipped gym, a stimulating discovery room, an engaging library and an exciting outdoor playground! With part-time, half-day and full-day options, Temple Sinai Community Preschool has a program to suit every family's needs. We encourage you to book a tour and see for yourself!



Contact Shoshi Lugassy, Director of Early Childhood Programs, at 416.560.7253 or email shoshi@templesinai.net to learn more.

ENRICHED JEWISH EDUCATION FOR YOUR CHILDREN



At Temple Sinai School, we seek to enrich the Jewish lives of our students and build meaningful connections to family, friends, Temple, the larger Jewish community and Israel. We nurture a sense of curiosity through learning, and celebrate living Jewishly by embracing Jewish values and social justice.

Our Sunday School program consists of immersive and experiential learning, Jewish prayer, Hebrew learning, Israel studies, music, art, dance, cooking, sports, and more! All learners are welcome in our school with inclusive and supportive educational programs that are tailored to our students' needs.



Contact Ilana Mansharov, Acting Director of Congregational Learning, at 437.522.7845 or email ilana@templesinai.net to learn more.





Spiritual

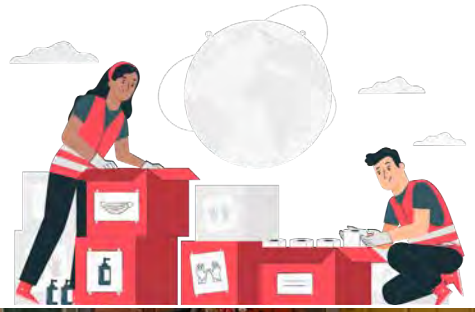
Live the Jewish calendar joyously at every age and stage of life. In a congregation that sings and celebrates together, our meaningful services enjoy strong lay participation, using our own siddur. Our dynamic and innovative festival services include elements of drama, music, poetry and prayer, which deepen our connection to Judaism and to each other.

Be Inspired

- Kabbalat Shabbat services
- Shabbat morning services
- Morning Minyan (in person)
- **Boker Tov:** our inspirational and concise daily morning service (virtual)
- **Shabbat M'nuchah:** our once-a-month Kabbalat Shabbat service with an emphasis on mindfulness, meditation and music
- S'lichot and High Holy Days services
- Festival observances and celebrations throughout the Jewish year
- Musical programming inspired by our Jewish heritage and traditions

Contribute

- Torah Chanting
- Shiva Leaders
- Choir
- Greeters
- Ushers
- Sponsor a minyan breakfast/lunch in memory or in honour.
- **D'var Torah:** help in the development of students writing their d'var torah.
- **B'nei Mitzvah logistics coordination:** help to coordinate rehearsals, honours.





Tikkun Olam

Change can happen when each of us commits to doing something meaningful with our time and resources for the sake of Tikkun Olam (repairing the world). At Temple Sinai, we apply Jewish traditions and values to injustices within and beyond the Jewish world.

Our varied initiatives include the collection of food and clothing for at-risk communities as well as aiding recently arrived refugees. We also provide weekly meals to vulnerable members of Toronto's unhoused community.

Be Inspired

- **Seeds of Hope:** Serving areas in downtown Toronto, Seeds of Hope offers opportunities and support for those experiencing homelessness. Temple Sinai is proud to partner with Seeds of Hope to donate food items weekly and help feed Toronto's homeless. There is a greater demand than ever for food security in these inflationary times, and Seeds of Hope relies on and greatly appreciates the incredible generosity and continued support from Temple Sinai and our community at large.
- **Braeburn Neighbourhood Place:** Operating in the Rexdale community in Toronto, this agency focuses on serving neighbourhoods and families that have been made vulnerable by factors of risk and who are disadvantaged by poverty. Temple Sinai works with them to provide clothing, food, hygiene kits, and arts and crafts supplies for their community.

Contribute

- Make a donation to our Caring Community Fund.
- Get involved in a leadership capacity in our Tikkun Olam group.
- Create new initiatives in our Temple community to allow more ways to give back to our greater community.

Membership Contributions

Family Membership

1. Find the income category below that most closely reflects your family income (or your age in the young members section on the next page). For married members, the age of the older spouse is determinative.
2. Beside each income category is a matching contribution amount.
3. Note the income and contribution amount when you complete your membership application.

GROSS FAMILY INCOME

CONTRIBUTION

Up to \$20,000	\$515
\$20,001 to \$25,000	\$660
\$25,001 to \$30,000	\$795
\$30,001 to \$35,000	\$990
\$35,001 to \$40,000	\$1,105
\$40,001 to \$45,000	\$1,290
\$45,001 to \$50,000	\$1,545
\$50,001 to \$55,000	\$1,680
\$55,001 to \$60,000	\$1,870
\$60,001 to \$65,000	\$2,050
\$65,001 to \$70,000	\$2,290
\$70,001 to \$80,000	\$2,475
\$80,001 to \$90,000	\$2,720
\$90,001 to \$100,000	\$2,980
\$100,001 to \$110,000	\$3,225
\$110,001 to \$120,000	\$3,395
\$120,001 to \$130,000	\$3,565
\$130,001 to \$140,000	\$3,725
\$140,001 to \$150,000	\$3,895
\$150,001 to \$155,000	\$4,050
\$155,001+	\$4,220

Young Adult Membership

The next generation of Temple Sinai is leading the way forward by living Jewishly. These young adults, ranging in age from 26 to 36, have the opportunity to connect to the Jewish community through social events, networking evenings, social action projects and more!

Our contribution structure makes joining Temple affordable for young adults and young families:

AGE	CONTRIBUTION
26.....	\$36
27.....	\$54
28.....	\$72
29.....	\$180
30.....	\$270
31.....	\$360
32 to 36.....	\$540

*For married members, the age of the older spouse is determinative.
Members' dependent children under 26 are included in the family contribution.*

Temple Sinai Connects Digital Membership

Our fabulous online options have widened our reach, allowing us to give those who live outside the Greater Toronto Area a taste of what makes Temple Sinai so special.

Through **Temple Sinai Connects**, our digital membership, we invite you to be part of our extended family and experience the warmth and vibrancy of our community — virtually.

CONTRIBUTION: \$360

For more information, please call the Temple Office at 416.487.4161 or email fran@templesinai.net.





Additional Contributions

In addition to your membership contribution, the following items will be included in your annual renewal total:

Building Maintenance Fund

Each new member family is assessed one year's membership contribution, payable over three years (minimum \$515). New members under the age of 37 are given the option of paying the assessment either commencing in the year they join or in any year up to and including the year in which their 37th birthday occurs. Where the member chooses to defer the payment, the amount is based on the membership income category applicable to the year in which the payments commence. For married members, the age of the older spouse is determinative.

Union for Reform Judaism (URJ)

The URJ charge is calculated at 12% of the basic membership contribution plus \$10 per family unit to support Camp George, our Canadian Reform camp.

Health, Safety and Security

A levy of 10% of your membership contribution will be added to your renewal total. This levy will help to defray the cost of upgrades to our security infrastructure, additional costs of health safety measures, and to maintain an appropriate level of security around our building throughout the year.

Cemetery (for those who have purchased plots)

The Temple Sinai section of Pardes Chaim Cemetery is located at 11818 Bathurst Street, Maple. Plots are currently available for members and their immediate family at a cost of \$3,701.88 (including HST). A down payment of \$1,701.88 (including HST) is required to reserve a plot. The balance is payable in four equal installments of \$500 annually per plot. Side-by-side burials are available for interfaith Temple families at Lambton Hills Jewish Cemetery on Royal York Road. Plots are currently available for members and their immediate family at a cost of \$4,802.50 (including HST) per plot. A down payment of \$2,642.50 (including HST) is required to reserve a plot. The balance is payable in four equal installments of \$540 annually. If you have purchased a plot and are paying in four installments, your statement will reflect your current and/or your past installment.

Voluntary Contributions

Annual Campaign for Tzedakah

Please consider a gift to our Annual Campaign for Tzedakah to support Temple's vision of providing an inclusive and welcoming spiritual home for everyone. If you wish to make a gift through cheque, securities, Israel bonds, your fund at the Jewish Foundation or your family foundation, please contact Ann Rosenfield at ann@templesinai.net or 416.487.4161.

ARZA Canada

(\$36 per family, \$18 per single adult)

ARZA Canada is the Zionist organization of the Canadian Reform Movement. ARZA Canada works to increase Israel engagement and helps to create an Israel that is both Jewish and democratic. Please note that should you choose to make a contribution, your email address will be shared with ARZA Canada. For more information, please visit arzacanada.org.

Youth Travel

(\$54)

As part of creating Jewish leaders of tomorrow with a positive connection to our Temple and to Jewish peoplehood, we invite our youth to participate in our Jewish travel programs, youth group events, educational trips, summer camp, and leadership opportunities. Temple would like to continue nurturing our children by remaining an inclusive and caring community, and so these learning experiences are subsidized and open to everyone. We invite you to support our youth in becoming our future leaders and giving them the opportunity to live our Jewish traditions.

World Union for Progressive Judaism (WUPJ)

(\$36)

The WUPJ promotes Progressive Judaism in places where individuals and groups are seeking authentic, yet modern ways of expressing themselves as Jews. The WUPJ serves congregations and communities in nearly 40 countries, encompassing more than 1,200 Reform, Progressive, Liberal, and Reconstructionist congregations. Further information is available at wupj.org or by emailing wupj@urj.org.



Our Team

ADMINISTRATION

Rayner Conway
Executive Director
rayner@templesinai.net
Ext. 229

Risa Chelsky
Receptionist
risa@templesinai.net
Ext. 220

Sheri Federman
*Office Manager/Executive Assistant to
Rayner Conway and Rabbi Michael Dolgin*
sheri@templesinai.net
Ext. 234

Deborah Tameanko
*Assistant to Rabbis Shaner and Englander
and to Cantors Osborne and Lebovitz*
deb@templesinai.net
Ext. 242

COMMUNICATIONS

Sam Gershkovich
Communications Manager
sam@templesinai.net
Ext. 217

David Collin
Programs & Social Media Coordinator
david@templesinai.net
Ext. 334

DEVELOPMENT

Ann Rosenfield
Director of Development
ann@templesinai.net
Ext. 241

CLERGY

Rabbi Michael Dolgin
dolgin@templesinai.net
Ext. 222

Rabbi Jordan Shaner
rabbishaner@templesinai.net
Ext. 235

Rabbi Lawrence Englander
rabbienglander@templesinai.net
Ext. 218

Cantor Charles Osborne
cantorosborne@templesinai.net
Ext. 233

Cantor Meara Lebovitz
cantorlebovitz@templesinai.net
Ext. 276

FINANCE

Ronna Rubin
Director of Finance
ronna@templesinai.net
Ext. 230

Deborah Tepper
Assistant Bookkeeper
deborah@templesinai.net
Ext. 231

Ilona Meron
Accounts Payable
ilona@templesinai.net
Ext. 242



CONGREGATIONAL LEARNING AND YOUTH

Ilana Mansharov

Acting Director of Congregational Learning
ilana@templesinai.net
Ext. 232

Shoshi Lugassy

Director of Early Childhood Programs
shoshi@templesinai.net
Ext. 238

BobbieLynn Brass

Administrative Assistant
bobbie Lynn@templesinai.net
Ext. 227

Lauren Bernstein

Youth Programs Coordinator
lauren@templesinai.net
Ext. 244

MEMBERSHIP

Fran Isaacs

Member Services Coordinator
fran@templesinai.net
Ext. 223

MAINTENANCE AND FACILITY

Ben Chaharlang

Facilities Manager
ben@templesinai.net
Ext. 239

OPERATIONS AND EVENTS

Marcie Goldberg

Operations Coordinator
marcie@templesinai.net
Ext. 228

Randy Starr

Coordinator of Technology and Media
randy@templesinai.net
Ext. 243



President

Abraham (Bram) Costin

Executive Vice-President

Brian I. Simon

Vice-Presidents

Madeleine Cooper
Adam Dean

Treasurer

Jordan Gould

Past President

Michael B. Fraleigh

Board of Directors

Kayli Balaban
David Brill
Rhonda Cohen
Andrew Edelberg
Deborah Epstein-Franks
Annette Filler
Rosemarie Hurst
Anthony Meles
Eleanor Millar
Mike Munroe
Jeff Rose
Noah Singer
Carrie Swartz

Rabbis

Michael N. Dolgin
Jordan Shaner
Lawrence Englander

Founding Rabbi

Jordan Pearlson^{ᵀᵀ}

Cantors

Charles D. Osborne
Meara Lebovitz

Cantor Emeritus

Severin Weingort^{ᵀᵀ}

Composer-in-Residence

Ben Steinberg^{ᵀᵀ}

210 Wilson Avenue
Toronto, Ontario M5M 3B1

Office: 416.487.4161
School: 416.487.3281
Emergency: 437.243.6301

Calendar of Jewish Holidays

S'lichot	Saturday, September 9, 2023
Erev Rosh Hashanah	Friday, September 15, 2023
Rosh Hashanah	Saturday, September 16 and Sunday, September 17, 2023
Kol Nidrei	Sunday, September 24, 2023
Yom Kippur *	Monday, September 25, 2023
Erev Sukkot	Friday, September 29, 2023
Sukkot	Saturday, September 30 to Friday, October 6, 2023
Simchat Torah	Friday, October 6, 2023
Shemini Atzeret *	Saturday, October 7, 2023
Erev Chanukkah (first candle)	Thursday, December 7, 2023
Chanukkah	Friday, December 8 to Friday, December 15, 2023
Tu B'Shvat	Thursday, January 25, 2024
Erev Purim	Saturday, March 23, 2024
Purim	Sunday, March 24, 2024
Erev Pesach (first seder)	Monday, April 22, 2024
Pesach **	Tuesday, April 23 to Monday, April 29, 2024
Yom HaShoah	Monday, May 6, 2024
Yom HaZikaron	Monday, May 13, 2024
Yom Ha'Atzmaut	Tuesday, May 14, 2024
Lag B'Omer	Sunday, May 26, 2024
Erev Shavuot	Tuesday, June 11, 2024
Shavuot *	Wednesday, June 12, 2024
Tisha B'Av	Tuesday, August 13, 2024

**Yizkor Service*

***Yizkor Service on last day of Pesach*