



TEMPLE SINAI  
CONGREGATION OF TORONTO

*Come Together*



2022-2023 / 5783

# ***Membership Guide***

# Message from Our Rabbi



Dear Temple Sinai family,

I have found it quite emotional over the last few months to welcome members back to our communal home. Many had not been inside the building since the beginning of the pandemic.

Thankfully, it is safer to come to Temple than to go many other places we may be required to attend in person. Between our air circulation system upgrades, cleaning protocols, and masking and vaccination standards, Temple is as safe a destination as one can choose.

For the last two years and more, we have trusted that we are part of a strong, vibrant community and that our families are part of something larger and lasting. This trust means we can have conversations with those whom we agree and disagree about everything from politics to which bakery makes the best bagels. We have worked hard during this challenging time to hold on to and even build our Temple community. The moment has come for us to continue to enjoy the fruits of those cooperative efforts.

It's time to renew our connection to Temple Sinai and to each other. Let's remember all we have built and accomplished together and consider what we can yet achieve. Whether at a Temple group or a Shabbat service, whether making sandwiches for the disadvantaged in our city or eating them after a morning minyan, whether sitting in the Temple Garden or the Sanctuary or traveling together to Israel, this will be an exciting new year. The next steps are ours to take.

Now is the time to Come Together. It is time to continue our tradition. Thank you for your continued commitment to Temple Sinai.

A handwritten signature in black ink, appearing to read 'Michael Dolgin'.

Rabbi Michael Dolgin



A photograph of the Temple Sinai building, a modern structure with large glass windows and a central dome, surrounded by greenery.

# ***Come Together at Temple Sinai***

Temple Sinai is more than a synagogue community; it is your spiritual home. You are among many warm, wonderful people who make up our congregation. Whether at lifecycle moments, learning opportunities, prayer, celebration, or *Tikkun Olam* (repairing the world), Temple Sinai has a place for you!

## ***Benefits of Membership***

- Belong to a warm, welcoming community where tradition and innovation meet
- Delight in a full roster of Temple Sinai social, spiritual, and learning opportunities
- Engage in an inclusive, equitable and welcoming Temple community
- Experience life's events together: a baby naming, a bar or bat mitzvah, a wedding or a funeral with our Rabbis and Cantors and the support of our Temple community
- Provide children opportunities to learn and celebrate Jewish living by embracing Jewish values, social justice, and a focus on Israel
- Enjoy musical programs and events throughout the year
- Observe the High Holy Days together – either in person or live streamed
- Receive rabbinic counselling and pastoral support
- Connect in meaningful ways to Israel and our larger world
- Opportunity to purchase burial plots at Pardes Chaim or Interfaith section at Lambton Hills Cemetery
- Use of Temple Sinai's facilities including newly renovated Fanny and Al Green Halls complete with the new Shnier Family kitchen

# Get Involved at Temple Sinai

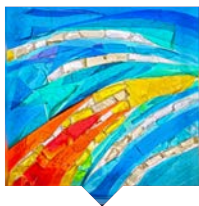
For nearly 70 years, Temple Sinai has been recognized as one of the most vibrant and innovative Jewish congregations in the Toronto area. Today, that legacy continues with our welcoming and inclusive approach to building community, which is firmly rooted in Jewish tradition.

Our programs, outreach and services are created to bring meaning, comfort, learning and joy to our members. Designed to inspire and engage, our programs endeavour to involve congregants as active participants or contributors.

We have outlined our opportunities in four categories:



***Community***



***Learning***



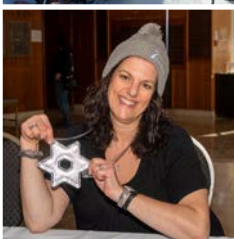
***Spiritual***



***Tikkun Olam***

At Temple Sinai, contributions are received in a myriad of ways. The *mitzvah of Tzedakah* – be that with your time, expertise, insights, or financial contributions, is appreciated greatly. We hope you will find ways to both be inspired and contribute, to strengthen our vibrant community.







# Community

This is our community to create. It is ours to shape and form. You will get out of it what you put into it. Temple Sinai offers an excellent range of opportunities for you — at every age and stage — to build relationships and find your own special place in the Temple community.

## ***Be Inspired***

Get connected through our groups:

- Canasta
- Choir
- Clubyish
- Eco-Sinai
- Gardening
- Israel Connections
- Mah Jong
- Men's Chat Group
- Mindfulness for Healing
- NextGen (20s/30s)
- Photography
- Pilates
- Power of Posture
- Renaissance
- Snowshoeing
- Temple Sinai Golf Tournament
- Temple Sinai Social Club
- Temple Sinai Stitchers
- Tikkun Olam

## ***Contribute***

Along with making new friends, learning new things and strengthening our community, we are also looking for new leaders to help with our existing groups. Temple is always interested in ideas to form new groups. We are also looking for Administrative Help, Technical Assistance or Special Event Help.







# Learning

Regardless of age, there is always something new to learn at Temple Sinai. Lifelong learning is built into the fabric of our Temple community. As we each pursue our own Jewish journeys, our rabbis, cantors and educators help us to answer our burning Jewish questions, to connect to the wealth of Jewish wisdom and to satisfy our curiosity.

## ***Be Inspired***

- Rabbinic series on relevant topics
- Weekly Chevrat Torah Study
- Masterclasses at the High Holy Days
- Lewis David Katzman Literary program
- Adult Hebrew language classes
- Torah chanting classes
- Special learning opportunities throughout the year with guest speakers
- Remote Shalom – online programs with our sister congregation, *Ramat Shalom*, in Israel

## ***Contribute***

- Temple Sinai School: Parent Advisory Group
- Temple Sinai Community Preschool: Parent Advisory Group, Community Contributors
- Youth Opportunities: Kehillah, Madrichim, LOTSSY Board (League of Temple Sinai Senior Youth), Teen Israel Trip 2023 and the opportunity to receive a post-secondary scholarship through the Gordon Scholars program
- Young Families: Help lead our young family programming and encourage involvement



TEMPLE SINAI

# COMMUNITY PRESCHOOL

**Play, learn and grow... together!**

Temple Sinai Community Preschool provides a happy, enriching and supportive Jewish environment for children to learn and gain an understanding of the world around them. Our program is based on promoting positive self-esteem, curiosity and creativity. Our goal is to help develop the child's social, emotional, intellectual and physical capabilities to the fullest while learning about Jewish festivals, traditions and values.



**Please call Shoshi Lugassy, Director of Early Childhood Programs, at 416.560.7253 to learn more about creating wonderful Jewish memories for your children.**



TEMPLE SINAI  
**SCHOOL**

**JK to Grade 12**



At Temple Sinai, Jewish learning begins in junior kindergarten and continues through to grade 12 with engaging and interactive opportunities that build Jewish identity, Jewish literacy and Jewish community. While offering the flexibility to learn in person or online, the goals of our school are focused on engaging children and teens to living Jewish values, understanding the meaning of our traditions, and creating a sense of belonging and pride in Judaism.

**Please call Carrie Swartz, Director of Congregational Learning, at 437.522.7845 to start your child's Jewish educational journey.**



**COME TOGETHER** AT TEMPLE SINAI



# Spiritual

Live the Jewish calendar joyously at every age and stage of life. In a congregation that sings and celebrates together, our meaningful services enjoy strong lay participation that includes using our own siddur. Our dynamic and innovative festival services include elements of drama, music, poetry and prayer that aim to deepen our connection to Judaism and each other.

## ***Be Inspired***

- Kabbalat Shabbat services
- Shabbat morning services
- Morning Minyan
- Boker Tov – our inspirational and concise daily morning service
- Shabbat M’nuchah – our once-a-month Kabbalat Shabbat service with an emphasis on mindfulness, meditation and music
- S’lichot and High Holy Days services
- Festival observances and celebrations throughout the Jewish year
- Musical programming inspired by our Jewish heritage and traditions

## ***Contribute***

- Torah Chanting
- Shiva Leaders
- Choir
- Greeters
- Ushers
- D’var Torah: help in the development of students writing their d’var torah
- B’nei Mitzvah logistics coordination: Coordinate rehearsals, honours





# *Tikkun Olam*

Change can happen when each of us commits to doing something meaningful with our time and resources for the sake of *Tikkun Olam* (repairing the world). At Temple Sinai, we apply Jewish tradition and values to injustices within and beyond the Jewish world.

Some of our initiatives include collection of food and clothing for at-risk communities and involvement with recently arrived refugees. We also provide weekly meals to vulnerable members of Toronto's homeless community.

## ***Be Inspired***

- **Seeds of Hope:** Serving areas in downtown Toronto, Seeds of Hope offers opportunities and support for those experiencing homelessness. Temple Sinai members donate food items weekly to help feed their community members. During the pandemic, the Temple community has risen to the occasion with incredible generosity and commitment to supporting our greater community.
- **Braeburn Neighbourhood Place:** Operating in the Rexdale community in Toronto, this agency focuses on serving neighbourhoods and families that have been made vulnerable by factors of risk and who are disadvantaged by poverty. Temple has worked with them to provide clothing, food, hygiene kits, and arts and crafts supplies for their community.

## ***Contribute***

- Get involved in a leadership capacity in our Tikkun Olam Group
- Create new initiatives in our Temple community to allow more ways to give back to our greater community





# Membership Contributions

1. Find the income category that most closely reflects your family income or your age in the young members section. For married members, the age of the older spouse is determinative.
2. Beside each income category is a contribution amount that matches that income category.
3. Note the income and dues level amount when you complete your membership application.

## GROSS FAMILY INCOME

## CONTRIBUTION

Up to \$20,000 .....	\$485
\$20,001 to \$25,000 .....	\$620
\$25,001 to \$30,000 .....	\$750
\$30,001 to \$35,000 .....	\$935
\$35,001 to \$40,000 .....	\$1,045
\$40,001 to \$45,000 .....	\$1,215
\$45,001 to \$50,000 .....	\$1,455
\$50,001 to \$55,000 .....	\$1,585
\$55,001 to \$60,000 .....	\$1,765
\$60,001 to \$65,000 .....	\$1,935
\$65,001 to \$70,000 .....	\$2,160
\$70,001 to \$80,000 .....	\$2,335
\$80,001 to \$90,000 .....	\$2,565
\$90,001 to \$100,000 .....	\$2,810
\$100,001 to \$110,000 .....	\$3,040
\$110,001 to \$120,000 .....	\$3,205
\$120,001 to \$130,000 .....	\$3,360
\$130,001 to \$140,000 .....	\$3,515
\$140,001 to \$150,000 .....	\$3,675
\$150,001 to \$155,000 .....	\$3,820
\$155,001+ .....	\$3,980

The next generation of Temple Sinai is leading the way forward by doing Jewish. These young adults, ranging in age from 22 to 36, have the opportunity to connect to the Jewish community through social events, networking evenings, social action projects and more!

Our contribution structure makes joining for young adults and young families affordable:

AGE	CONTRIBUTION
26.....	\$36
27.....	\$54
28.....	\$72
29.....	\$180
30.....	\$270
31.....	\$360
32 to 36.....	\$540

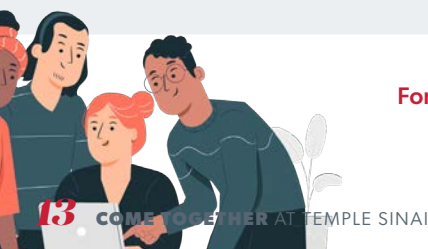
*For married members, the age of the older spouse is determinative.  
Members’ dependent children under 26 are included in the family contribution.*

Have friends or family outside the GTA? One silver lining of the pandemic is that it has allowed us to connect with so many new people through new technology platforms. Our fabulous online options have widened our reach, allowing us to give others a taste of what makes our Temple Sinai community special.

Through **Temple Sinai Connects**, our new digital membership, we invite those who live outside the Greater Toronto Area to be part of our extended family for the 2022-2023 year and experience — virtually — the warmth and vibrancy of our community.

**CONTRIBUTION: \$360**

For more information, please call the Temple Office at 416.487.4161 or email [fran@templesinai.net](mailto:fran@templesinai.net).



# Additional Contributions

In addition to your fair-share membership contribution, the following items apply:

## Union for Reform Judaism (URJ)

The URJ charge is calculated at 12% of the basic membership contribution plus \$10 per family unit to support Camp George, our Canadian Reform camp.

## Health, Safety and Security

A levy based on 10% of your membership contribution will be added to your statement. This levy will help to defray upgrades to our security infrastructure, additional costs of health safety measures, and to maintain an acceptable level of security around our building throughout the year.

## ARZA Canada

(\$5 per adult 18+)

ARZA Canada is the Zionist organization of the Canadian Reform Movement. ARZA Canada works to increase Israel engagement and helps to create an Israel that is both Jewish and democratic. Please note your email address will be shared with Arza Canada. For more information, please visit [arzacanada.org](http://arzacanada.org).





A photograph of the Temple Sinai building, a large, light-colored structure with a prominent dome and arched windows, surrounded by greenery.

# Voluntary Contributions

## **Annual Campaign for Tzedakah**

If your means allow, please consider a gift to our Annual Campaign for Tzedakah and help all our family feel part of our community. If you wish to make a gift of securities, Israel bonds, through your fund at the Jewish Foundation or your family foundation, please contact Ann Rosenfield at [ann@templesinai.net](mailto:ann@templesinai.net) or 416.487.4161.

## **Youth Travel**

(\$54)

As part of creating Jewish leaders of tomorrow with a positive connection to our Temple home, as well as to Jewish peoplehood, we invite our youth to participate in our Jewish travel experiences, youth group events, educational trips, camp and leadership opportunities. These learning experiences are subsidized and are open to everyone. Temple would like to continue nurturing our children by remaining an inclusive, caring community. We invite you to support our youth in becoming our future leaders and in giving them the opportunity to live our Jewish traditions.

## **World Union for Progressive Judaism (WUPJ)**

(\$36)

The WUPJ promotes Progressive Judaism in places where individuals and groups are seeking authentic, yet modern ways of expressing themselves as Jews. The WUPJ serves congregations and communities in nearly 40 countries, encompassing more than 1,200 Reform, Progressive, Liberal, and Reconstructionist congregations. Further information is available at [wupj.org](http://wupj.org) or by email [wupj@urj.org](mailto:wupj@urj.org).

## **Cemetery**

The Temple Sinai section of Pardes Chaim Cemetery is located at 11818 Bathurst Street, Maple. Plots are currently available for members and their immediate family at a cost of \$3,701.88 (including HST). A down payment of \$1,701.88 (including HST) is required to reserve a plot. The balance is payable in four equal installments of \$500 annually per plot. Side-by-side burials are available for interfaith Temple families at Lambton Mills Jewish Cemetery on Royal York Road. Plots are currently available for members and their immediate family only at a cost of \$4,802.50 (including HST). A down payment of \$2,642.50 per plot (including HST) is required to reserve a plot. The balance is payable in four equal installments of \$540 annually. If you have purchased a plot and are paying for the plot(s) in four installments, your statement will reflect your 2022/2023 installment.)



# Our Team

## ADMINISTRATION

### Rayner Conway

*Executive Director*

rayner@templesinai.net

Ext. 229

### Risa Chelsky

*Receptionist*

risa@templesinai.net

Ext. 220

### Marni Turner-Serbin

*Assistant to Rabbi Shaner and Englander  
and to Cantors Osborne and Lebovitz*

marni@templesinai.net

Ext. 242

### Sheri Federman

*Office Manager / Executive Assistant to  
Rayner Conway and Rabbi Michael Dolgin*

sheri@templesinai.net

Ext. 234

## COMMUNICATIONS

### Johanna Novis

*Director of Communications and  
Community Engagement*

johanna@templesinai.net

Ext. 225

### Sam Gershkovich

*Communications Manager*

sam@templesinai.net

Ext. 217

## DEVELOPMENT

### Ann Rosenfield

*Director of Development*

ann@templesinai.net

Ext. 241

## CLERGY

### Rabbi Michael Dolgin

rabbidolgin@templesinai.net

Ext. 222

### Rabbi Jordan Shaner

rabbishaner@templesinai.net

Ext. 235

### Rabbi Lawrence Englander

rabbienglender@templesinai.net

Ext. 218

### Cantor Charles Osborne

cantorosborne@templesinai.net

Ext. 233

### Cantor Meara Lebovitz

cantorlebovitz@templesinai.net

Ext. 276

## FINANCE

### Ronna Rubin

*Director of Finance*

ronna@templesinai.net

Ext. 230

### Deborah Tepper

*Assistant Bookkeeper*

deborah@templesinai.net

Ext. 231

## MEMBERSHIP

### Fran Isaacs

*Member Services Coordinator*

fran@templesinai.net

Ext. 223

## CONGREGATIONAL LEARNING AND YOUTH

### Carrie A. Swartz

*Director of Congregational Learning*  
carrie@templesinai.net  
Ext. 226

### Shoshi Lugassy

*Director of Early Childhood Programs*  
shoshi@templesinai.net  
Ext. 238

### Ilana Mansharov

*Coordinator of School Programs*  
ilana@templesinai.net  
Ext. 232

### Lauren Bernstein

*Youth Programs Coordinator*  
lauren@templesinai.net  
Ext. 244

### BobbieLynn Brass

*Administrative Assistant*  
bobbie Lynn@templesinai.net  
Ext. 227

## MAINTENANCE AND BUILDING

### Ben Chaharlang

*Facilities Manager*  
ben@templesinai.net  
Ext. 239

## OPERATIONS, PROGRAMS AND EVENTS

### Marcie Goldberg

*Programs and Operations Coordinator*  
marcie@templesinai.net  
Ext. 228

### Randy Starr

*Coordinator of Technology and Media*  
randy@templesinai.net  
Ext. 243



### President

Michael B. Fraleigh

### Executive Vice-President

Abraham (Bram) Costin

### Vice-Presidents

Jordan Gould  
Lori Miller Pike

### Treasurer

Brian I. Simon

### Past President

Shari Zuckerman

### Board of Directors

David Brill  
Adam Dean  
Deborah Epstein-Franks  
Annette Filler  
Elissa Freeman  
Rosemarie Hurst  
Aimee Israel  
Sam Kerr  
Anthony Meles  
Mike Munroe  
Jeff Rose  
Heather Sherman

### Rabbis

Michael N. Dolgin  
Jordan Shaner  
Lawrence Englander

### Founding Rabbi

Jordan Pearlson<sup>71</sup>

### Cantors

Charles D. Osborne  
Meara Lebovitz

### Cantor Emeritus

Severin Weingort<sup>71</sup>

### Composer-in-Residence

Ben Steinberg

210 Wilson Avenue  
Toronto, Ontario M5M 3B1

Office: 416.487.4161  
School: 416.487.3281  
Emergency: 437.243.6301

# Calendar of Holy Days

<b>S'l'ichot</b> .....	Saturday, September 17, 2022
<b>Erev Rosh Hashanah</b> .....	Sunday, September 25, 2022
<b>Rosh Hashanah</b> .....	Monday, September 26 and Tuesday, September 27, 2022
<b>Kol Nidrei</b> .....	Tuesday, October 4, 2022
<b>Yom Kippur *</b> .....	Wednesday, October 5, 2022
<b>Erev Sukkot</b> .....	Sunday, October 9, 2022
<b>Sukkot</b> .....	Monday, October 10 to Sunday, October 16, 2022
<b>Simchat Torah</b> .....	Sunday, October 16, 2022
<b>Shemini Atzeret *</b> .....	Monday, October 17, 2022
<b>Erev Chanukkah</b> (first candle) .....	Sunday, December 18, 2022
<b>Chanukkah</b> .....	Monday, December 19 to Monday, December 26, 2022
<b>Tu B'Shvat</b> .....	Tuesday, February 6, 2023
<b>Erev Purim</b> .....	Monday, March 6, 2023
<b>Purim</b> .....	Tuesday, March 7, 2023
<b>Erev Pesach</b> (first seder) .....	Wednesday, April 5, 2023
<b>Pesach **</b> .....	Thursday, April 6 to Wednesday, April 12, 2023
<b>Yom HaShoah</b> .....	Tuesday, April 18, 2023
<b>Yom HaZikaron</b> .....	Tuesday, April 25, 2023
<b>Yom Ha'Atzmaut</b> .....	Wednesday, April 26, 2023
<b>Erev Shavuot</b> .....	Thursday, May 25, 2023
<b>Shavuot *</b> .....	Friday, May 26, 2023
<b>Tisha B'Av</b> .....	Thursday, July 27, 2023

*\*Yizkor Service*

*\*\*Yizkor Service on last day of Pesach*